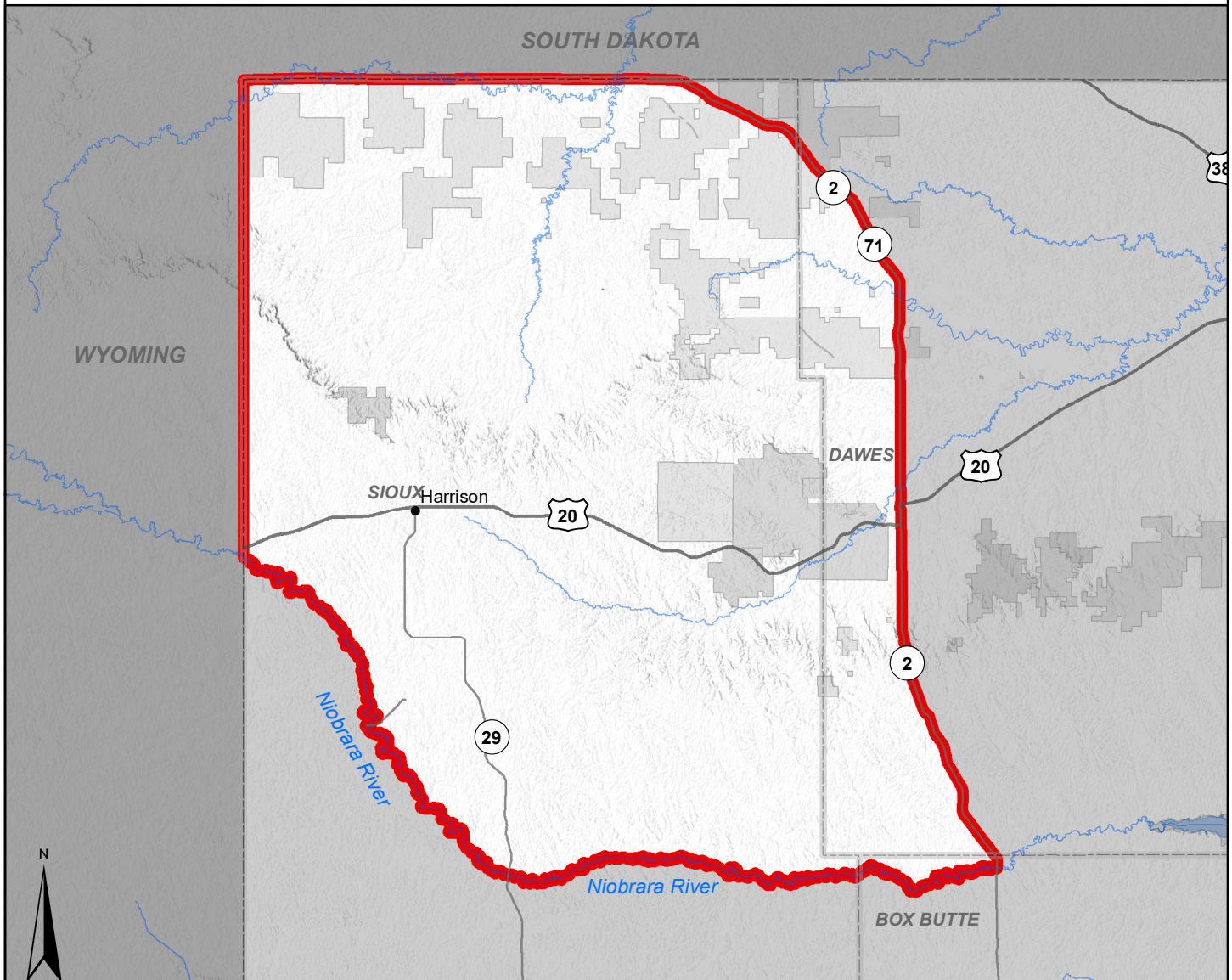


2025 Elk Unit 1

Elk Management Unit Map and Special Regulations



See the Elk Regulations and the Big Game Guide for additional hunting regulations. See the Public Access Atlas for regulations regarding public access areas.



Area open:

Unit 1 – Area included within a line commencing with the Niobrara River from the Nebraska-Wyoming state line east to NE Hwy. 2, thence north on NE Hwy. 2 to the Nebraska-South Dakota state line, thence west along the Nebraska-South Dakota line to the Nebraska-Wyoming state line, thence south along the Nebraska-Wyoming state line to the Niobrara River and as described in Unit 15 (C03.12E15).

Landowner permission required to hunt on private land. Public land restrictions may apply. State Parks, USFWS Refuges and other public lands may require access permits or have additional restrictions; contact managing agency office or see the Public Access Atlas for details.