

## **The regulations listed below are specific to Clear Creek WMA and in addition to the regular Wildlife Management Area regulations.**

### **Garden County Refuge**

- The Garden County Refuge is the area within 110 yards of the North Platte River and its side-channels (or as posted with "STATE OF NEBRASKA Game and Bird Sanctuary..." signs) in the Garden County portion of the Clear Creek Seasonal Refuge.
- Deer hunting is allowed during legal seasons from September 1<sup>st</sup> through the Sunday before Thanksgiving (Area is closed to all other hunting).
- Area closed to all access from the Monday before Thanksgiving through February 14<sup>th</sup>
- From Feb. 15<sup>th</sup> through the Sunday before Thanksgiving the area is open to general use allowed by regulations including scouting for deer hunting, wildlife viewing, fishing, etc.

### **Clear Creek Seasonal Refuge**

- Area closed to all access from the Monday before Thanksgiving through February 14<sup>th</sup>
- From Feb. 15<sup>th</sup> through the Sunday before Thanksgiving (or as authorized) the Clear Creek Seasonal Refuge is open to hunting, fishing, trapping and general use allowed by state Wildlife Management Area regulations.
- Non-toxic shot only.

### **Special Hunting Area**

- Non-toxic shot only.

#### **Monday before Thanksgiving through the end of Dark Goose Season**

Only hunters who have checked in at the check station/headquarters are allowed to hunt on the Special Hunting Area. Hunting is only allowed from designated blinds. A drawing is held each morning 45 minutes before legal shooting time to assign hunters to blinds. For information call the Clear Creek WMA Headquarters at (308) 778-5486 or the District Office in North Platte at (308) 535-8025.

#### **The day following Dark Goose Season until the Monday before Thanksgiving**

Area is open under same rules and regulations as Clear Creek Wildlife Management Area. Blinds are open on a first come first served basis. Hunting is allowed anywhere on the area (not just from the blinds). Dates are subject to change as authorized by the Nebraska Game and Parks Commission.

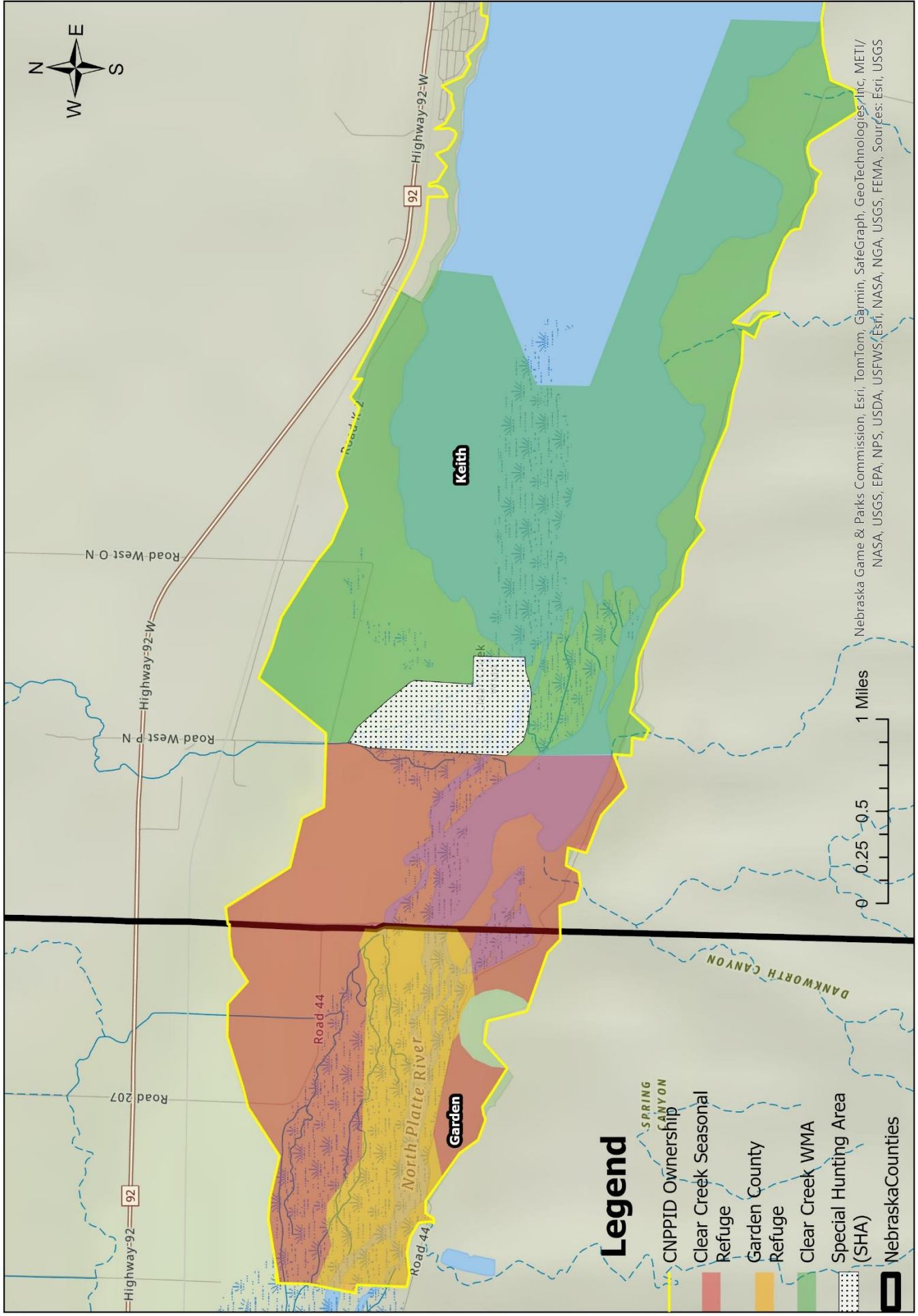
### **Clear Creek Wildlife Management Area**

Open to hunting, fishing, trapping, etc. within legal seasons. Non-toxic shot only.

### **Lake McConaughy State Recreation Area**

Hunting is permitted within legal seasons beginning the Tuesday following Labor Day through the conclusion of spring turkey season unless prohibited by signs or specific area regulations. Hunting is prohibited within 100 yards of any public use facility or activity area including picnic areas, campgrounds, cabins, concessions, boat ramps, and parking lots.

# Areas of differing regulations within Clear Creek WMA



Nebraska Game & Parks Commission, Esri, TomTom, Garmin, SafeGraph, GeoTechnologies, Inc, METI/ NASA, USGS, EPA, NPS, USDA, USFWS, Esri, NASA, NGA, USGS, FEMA, Sources: Esri, USGS