

Summit Lake Brushing Projects Update

Jeff Schuckman, Phil Chvala, Rebecca Munter

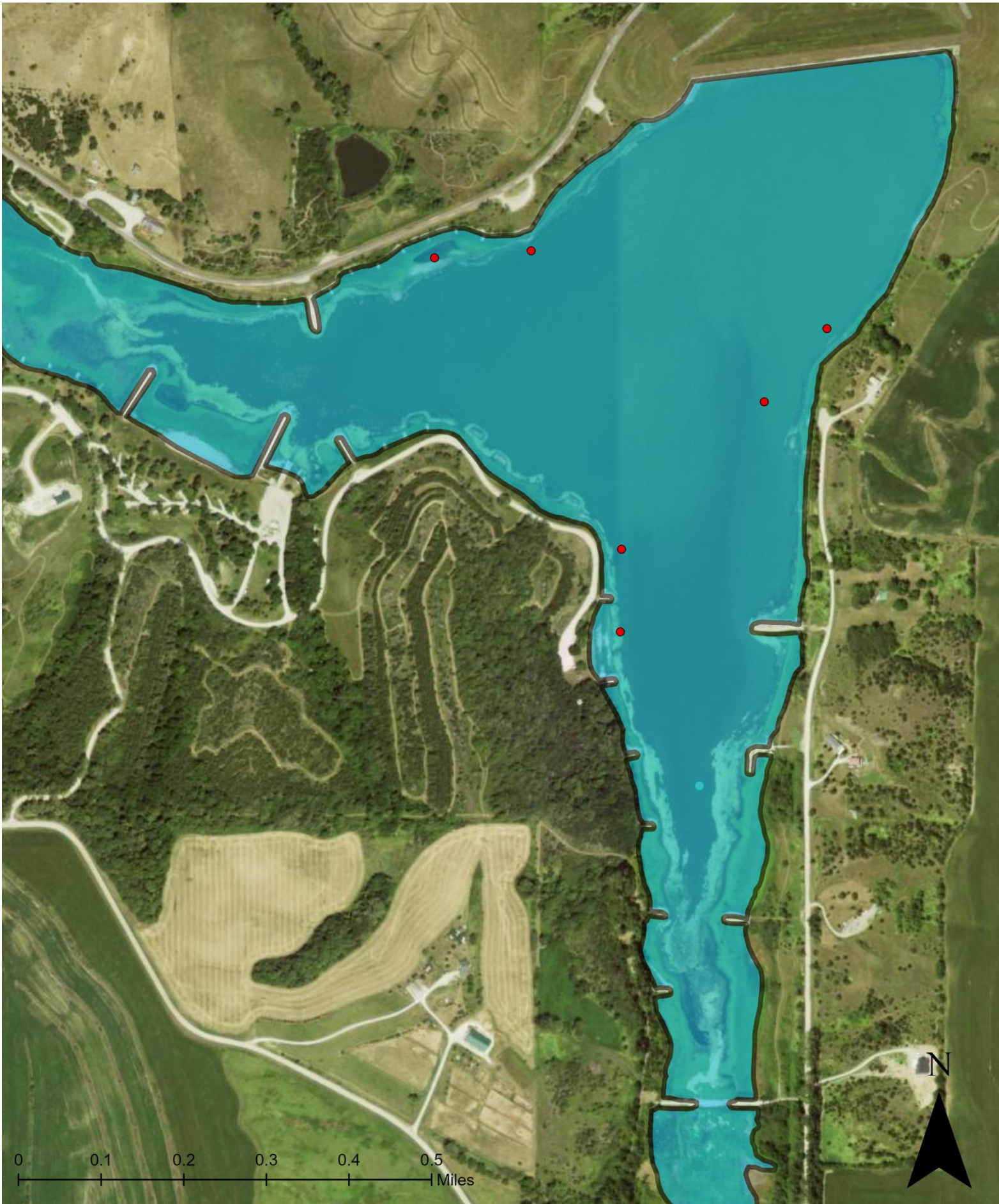
Northeast District, Fisheries Division

Nebraska Game and Parks Commission

February 2025

Natural cedar trees were placed at Summit Lake on February 25, 2021. NGPC Summit Lake SRA staff placed approximately 30-35 trees on the ice. Below is an overview of the project, including the map locations of the structures. (Please note that the structure coordinates are approximate and serve as general guides, as the structure may shift.)





Summit Lake Cedar Tree Piles

Trees	Latitude	Longitude
5	41.76358	-96.2911
5	41.76367	-96.2894
5	41.76265	-96.2842
5	41.7617	-96.2853
5	41.75977	-96.2878
5	41.7587	-96.2878
5	41.75668	-96.2864