

Maple Creek Brushing Projects Update

Jeff Schuckman, Phil Chvala, Rebecca Munter

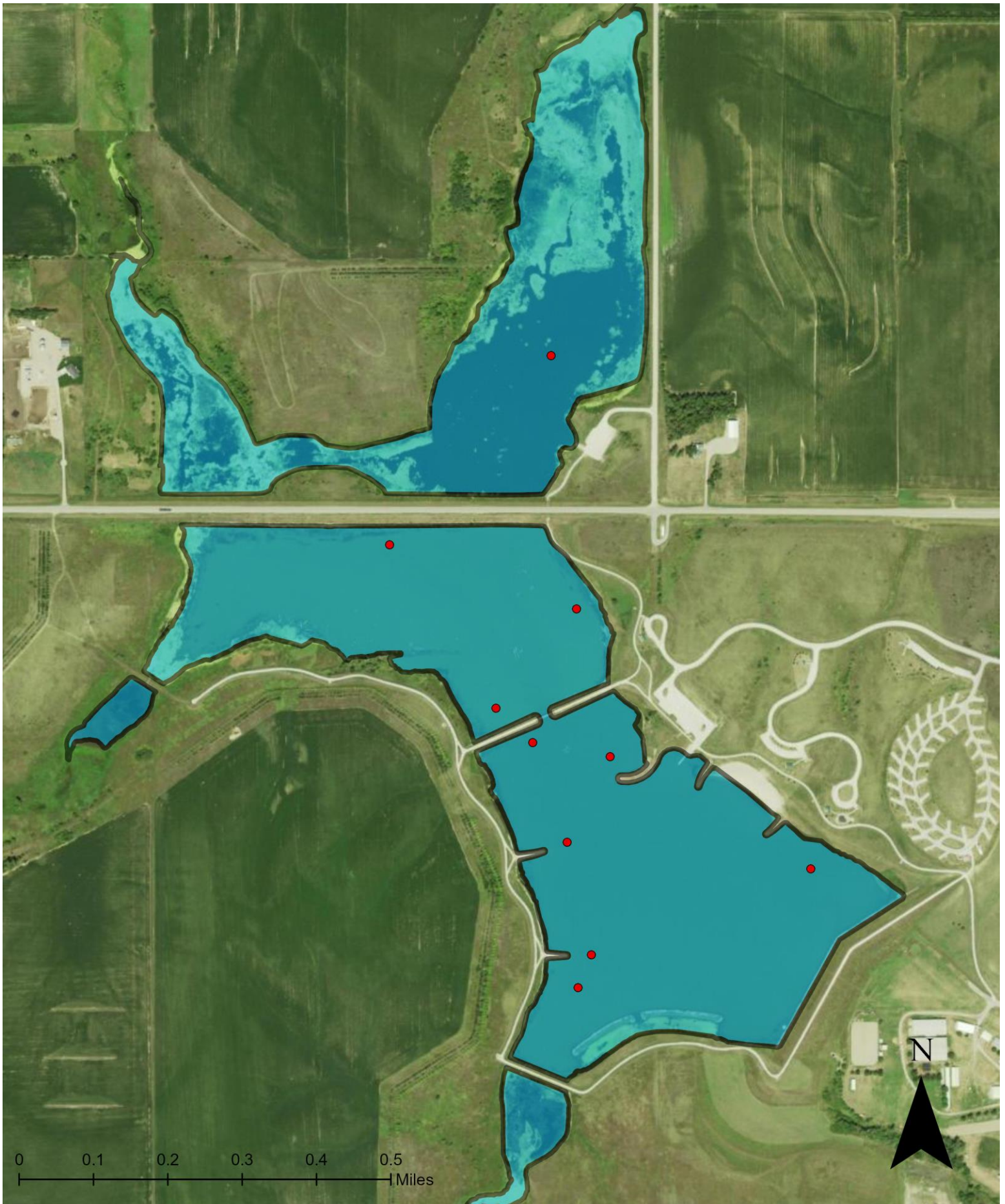
Northeast District, Fisheries Division

Nebraska Game and Parks Commission

February 2025

Artificial Structures were added at Maple Creek Lake as part of an Aquatic Habitat Project. Volunteers built a total of 100 artificial structures, with 50 placed in Maskenthine Lake and 50 placed in Maple creek in 2022. Below is an overview of the project, including the map locations of the structures. (Please note that the structure coordinates are approximate and serve as general guides, as the structure may shift.)





Maple Creek Artificial Structures

Location	Latitude	Longitude
1	41.70729008	-97.25402704
2	41.70776759	-97.25376815
3	41.70901818	-97.24950405
4	41.70940472	-97.25424024
5	41.71064391	-97.25340265
6	41.71084855	-97.25491031
7	41.71134876	-97.25562607
8	41.71279254	-97.25405749
9	41.71372047	-97.25769245
10	41.71647361	-97.25455148