

# **Wagon Train Brushing Projects Update**

Jehnsen Lebsock, Aaron Blank, Jake Werner, Matthew Perrion

Southeast District, Fisheries Division

Nebraska Game and Parks Commission

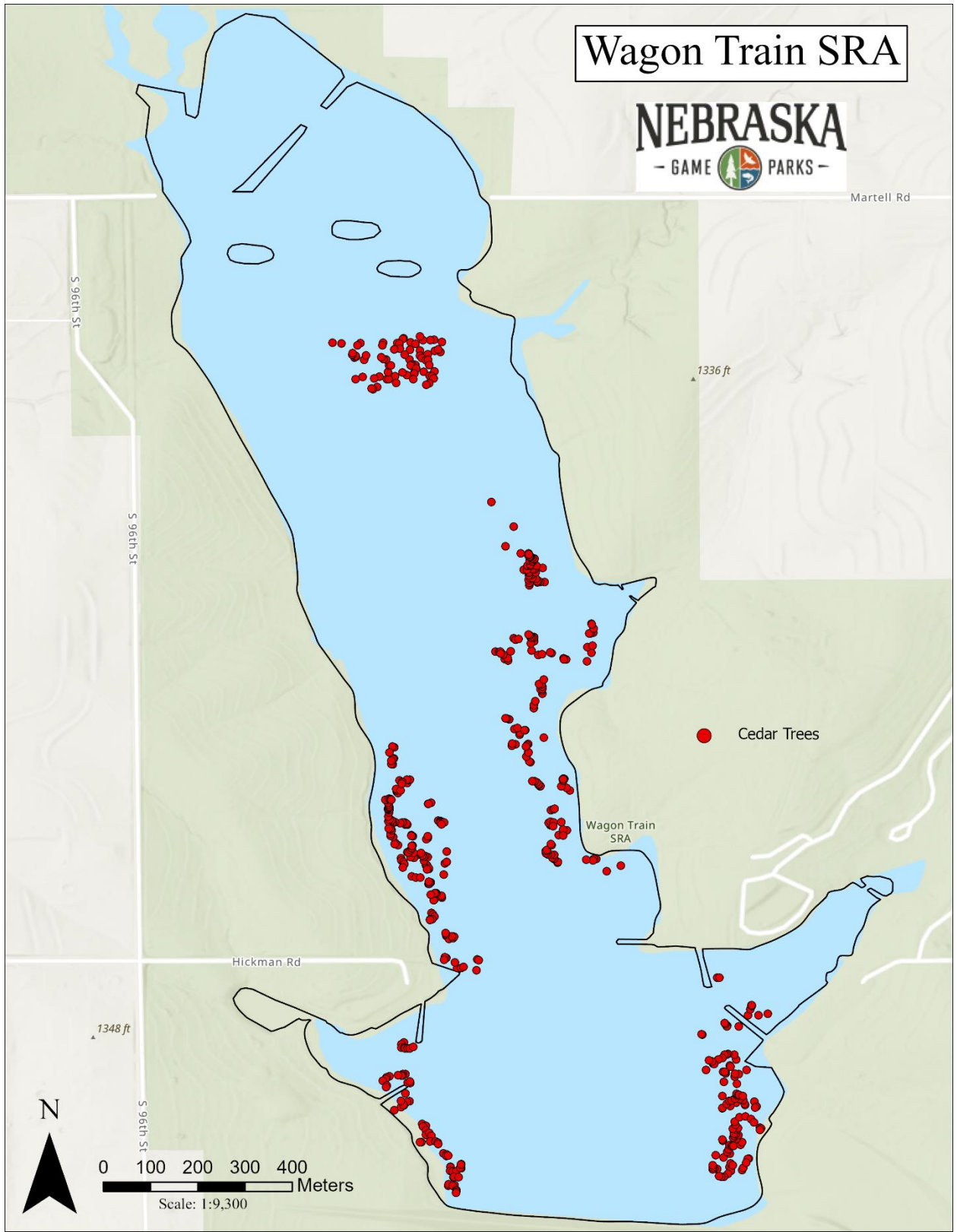
Between January 2022 and February of 2023, NGPC district biologist and a group of volunteers were able to cut and place 653 Cedar trees lakewide. Below is an overview of the projects including pictures from the project, map locations of the structures, and GIS coordinates where structures were placed. (Cedar tree coordinates are an approximate measure and serve as a general guide for tree locations as trees may move with the ice thaw)



# Wagon Train SRA



Martell Rd



1336 ft

● Cedar Trees

Wagon Train SRA

Hickman Rd

1348 ft



0 100 200 300 400 Meters  
Scale: 1:9,300





Latitude	Longitude	Trees
40.62389	-96.5863	3
40.62385	-96.5863	1
40.62378	-96.5863	1
40.62379	-96.5863	1
40.62377	-96.5862	1
40.62377	-96.5862	1
40.62377	-96.5862	1
40.6238	-96.5861	1
40.62328	-96.5862	1
40.62328	-96.5863	1
40.62325	-96.5863	1
40.62325	-96.5863	1
40.62326	-96.5864	1
40.62324	-96.5865	4
40.62322	-96.5866	1
40.62319	-96.5866	1
40.62316	-96.5867	1
40.62306	-96.5866	1
40.62304	-96.5866	1
40.62311	-96.5861	1
40.62312	-96.5862	1
40.62314	-96.5862	1
40.62277	-96.5862	1
40.62275	-96.5862	1
40.62269	-96.5863	1
40.62266	-96.5863	1
40.62269	-96.5863	1
40.62277	-96.5863	1
40.62291	-96.5862	1
40.62259	-96.5865	1
40.62199	-96.5859	1
40.62198	-96.586	1
40.62233	-96.5859	1
40.6223	-96.5859	1
40.62229	-96.5859	1
40.62221	-96.5858	1
40.62213	-96.5859	1
40.62217	-96.5858	1
40.62211	-96.5857	1

Latitude	Longitude	Trees
40.622	-96.5858	1
40.622	-96.5857	1
40.62198	-96.5856	1
40.62195	-96.5856	1
40.62178	-96.5855	1
40.62175	-96.5855	1
40.62173	-96.5855	1
40.62173	-96.5854	1
40.62152	-96.5854	1
40.62151	-96.5854	4
40.62144	-96.5854	1
40.62143	-96.5853	1
40.62144	-96.5853	1
40.62149	-96.5852	1
40.6215	-96.5852	1
40.62157	-96.5852	2
40.62157	-96.5852	1
40.62132	-96.5853	1
40.62133	-96.5853	1
40.62132	-96.5852	1
40.62116	-96.5854	1
40.62119	-96.5854	1
40.62118	-96.5853	1
40.62116	-96.5853	1
40.62107	-96.5853	1
40.62105	-96.5853	1
40.62102	-96.5853	1
40.62145	-96.5798	1
40.6215	-96.5798	1
40.62151	-96.5801	1
40.62144	-96.5801	1
40.62139	-96.5801	1
40.62133	-96.5802	1
40.62133	-96.5802	1
40.62134	-96.5803	1
40.62148	-96.5803	1
40.62148	-96.5804	1
40.62147	-96.5804	1
40.6215	-96.5804	1
40.62155	-96.5804	1

Latitude	Longitude	Trees
40.62174	-96.5803	1
40.62169	-96.5802	1
40.62159	-96.5801	1
40.62155	-96.58	1
40.62168	-96.5797	1
40.62167	-96.5797	1
40.6216	-96.5798	1
40.62177	-96.5801	1
40.62181	-96.5801	1
40.62186	-96.5801	1
40.62201	-96.5802	1
40.62203	-96.5802	1
40.62193	-96.5801	1
40.62191	-96.58	1
40.62192	-96.58	1
40.62192	-96.58	1
40.62194	-96.5799	1
40.62198	-96.5798	1
40.62205	-96.5799	1
40.62207	-96.58	1
40.6221	-96.58	1
40.62212	-96.5799	1
40.62215	-96.58	1
40.62215	-96.58	1
40.62222	-96.58	1
40.62226	-96.5799	1
40.62224	-96.58	1
40.62232	-96.58	3
40.62238	-96.58	1
40.62263	-96.5802	1
40.62264	-96.5802	1
40.62246	-96.5799	1
40.62248	-96.5798	1
40.62243	-96.5797	1
40.62236	-96.5796	1
40.62226	-96.5795	1
40.62225	-96.5795	1
40.62222	-96.5795	1
40.62274	-96.58	1
40.62267	-96.5801	1

Latitude	Longitude	Trees
40.62271	-96.5801	1
40.62286	-96.5802	1
40.62277	-96.5801	1
40.62278	-96.58	1
40.6227	-96.5798	1
40.62272	-96.5798	1
40.62278	-96.5798	1
40.62281	-96.5799	1
40.62282	-96.58	1
40.62288	-96.5799	1
40.62291	-96.5799	1
40.62288	-96.5799	1
40.62288	-96.5799	1
40.62286	-96.5798	1
40.62276	-96.5796	1
40.62266	-96.5796	1
40.62265	-96.5796	1
40.6231	-96.5799	1
40.62313	-96.5802	1
40.62323	-96.58	1
40.62328	-96.5799	1
40.62329	-96.58	1
40.6233	-96.5801	1
40.62332	-96.5802	1
40.62333	-96.5802	1
40.62332	-96.5802	1
40.62336	-96.5805	1
40.62344	-96.5801	1
40.62342	-96.5801	1
40.62336	-96.5798	1
40.62356	-96.58	1
40.62365	-96.58	1
40.62366	-96.5801	1
40.62365	-96.5801	1
40.62365	-96.5802	1
40.62359	-96.5802	1
40.62356	-96.5803	1
40.62348	-96.5804	1
40.62347	-96.5804	1
40.62352	-96.5804	1

Latitude	Longitude	Trees
40.62354	-96.5805	1
40.62403	-96.5806	1
40.62404	-96.5806	1
40.62419	-96.5799	1
40.6242	-96.5801	1
40.62419	-96.5801	1
40.62425	-96.5802	1
40.62423	-96.5802	1
40.62425	-96.5802	1
40.62443	-96.5793	1
40.6244	-96.5795	1
40.6253	-96.5853	1
40.6253	-96.5852	1
40.6244	-96.5797	1
40.62451	-96.5797	1
40.62532	-96.5851	1
40.62457	-96.5797	1
40.62459	-96.5797	1
40.62526	-96.5849	1
40.62459	-96.5797	1
40.62546	-96.5849	1
40.62544	-96.5848	1
40.62511	-96.5803	1
40.62512	-96.5803	1
40.6254	-96.5853	1
40.62549	-96.5855	1
40.6255	-96.5855	1
40.62545	-96.5855	1
40.6259	-96.5855	1
40.62585	-96.5854	1
40.62587	-96.5853	1
40.62724	-96.5821	1
40.62589	-96.5853	1
40.6259	-96.5854	1
40.62594	-96.5855	1
40.62596	-96.5855	1
40.62714	-96.5824	1
40.62634	-96.5857	1
40.62737	-96.5826	1
40.62632	-96.5857	1



Latitude	Longitude	Trees
40.62736	-96.5827	1
40.62737	-96.5827	1
40.62627	-96.5857	1
40.62734	-96.5827	1
40.62623	-96.5857	1
40.62622	-96.5858	2
40.62736	-96.5828	1
40.62621	-96.5858	1
40.6273	-96.5833	1
40.62731	-96.5833	1
40.6266	-96.5857	2
40.62737	-96.5834	1
40.62658	-96.5857	1
40.62737	-96.5834	3
40.62663	-96.5855	1
40.62739	-96.5834	1
40.62665	-96.5856	1
40.62745	-96.5834	2
40.62667	-96.5856	1
40.62672	-96.5857	1
40.62671	-96.5857	1
40.62672	-96.5857	1
40.62669	-96.5858	1
40.62746	-96.5835	2
40.62746	-96.5835	1
40.62749	-96.5836	1
40.62748	-96.5836	1
40.62752	-96.5836	1
40.62754	-96.5836	1
40.62725	-96.5859	1
40.62725	-96.5858	1
40.62718	-96.5858	1
40.6272	-96.5858	1
40.62717	-96.5858	2
40.62763	-96.5835	4
40.62717	-96.5858	1
40.62765	-96.5835	1
40.62704	-96.5861	1
40.62702	-96.586	1
40.62701	-96.586	1

Latitude	Longitude	Trees
40.62782	-96.5833	1
40.62783	-96.5832	1
40.6269	-96.5858	1
40.62791	-96.5832	3
40.6269	-96.5858	1
40.62693	-96.5858	1
40.62692	-96.5858	2
40.62793	-96.5832	1
40.62694	-96.5858	1
40.62782	-96.5832	2
40.62707	-96.5855	1
40.62801	-96.5835	1
40.62728	-96.5855	1
40.62803	-96.5835	3
40.62732	-96.5855	2
40.62806	-96.5835	1
40.62808	-96.5835	1
40.62751	-96.5855	1
40.62806	-96.5834	1
40.628	-96.5834	2
40.62734	-96.5859	1
40.62807	-96.5833	1
40.6274	-96.5858	1
40.62743	-96.5859	2
40.62741	-96.5859	1
40.62743	-96.5859	1
40.62829	-96.5835	4
40.62745	-96.586	1
40.62831	-96.5834	1
40.62744	-96.586	1
40.62833	-96.5834	1
40.62743	-96.5861	1
40.62739	-96.5861	1
40.6274	-96.5861	1
40.62748	-96.5861	1
40.62748	-96.5859	1
40.6275	-96.5862	1
40.62749	-96.5862	1
40.62867	-96.5831	1
40.62754	-96.5861	1

Latitude	Longitude	Trees
40.62872	-96.5832	1
40.62757	-96.5861	2
40.62762	-96.5861	1
40.62762	-96.5861	1
40.62875	-96.5833	1
40.62763	-96.5864	1
40.62767	-96.5864	1
40.62886	-96.5832	1
40.62739	-96.5863	1
40.62888	-96.5832	1
40.62735	-96.5863	1
40.62889	-96.5832	1
40.6289	-96.5832	1
40.62731	-96.5863	1
40.62727	-96.5863	1
40.6272	-96.5863	2
40.62888	-96.5832	2
40.62875	-96.5837	1
40.62875	-96.5837	1
40.62878	-96.5837	1
40.62878	-96.5837	1
40.62879	-96.5837	1
40.62883	-96.5837	1
40.62802	-96.5862	1
40.62885	-96.5838	1
40.62885	-96.5838	1
40.62802	-96.5862	1
40.62806	-96.5863	2
40.62804	-96.5862	1
40.62804	-96.5862	1
40.62921	-96.5839	1
40.62806	-96.5863	1
40.62922	-96.5839	1
40.62805	-96.5863	1
40.62807	-96.5864	1
40.62931	-96.5839	1
40.62805	-96.5865	1
40.62803	-96.5865	1
40.6294	-96.5839	1
40.62801	-96.5865	1

Latitude	Longitude	Trees
40.62939	-96.5839	1
40.62956	-96.5839	1
40.6278	-96.5861	1
40.62954	-96.5839	1
40.62782	-96.5861	1
40.62782	-96.5861	1
40.6295	-96.5839	1
40.62781	-96.5861	1
40.62766	-96.5864	1
40.62955	-96.5841	1
40.62779	-96.5865	1
40.62952	-96.5842	1
40.62956	-96.5842	1
40.62781	-96.5865	1
40.62785	-96.5865	1
40.62791	-96.5865	1
40.62794	-96.5865	2
40.62973	-96.5841	1
40.62795	-96.5866	1
40.62977	-96.5841	1
40.62808	-96.5866	1
40.62812	-96.5865	1
40.6281	-96.5865	1
40.62968	-96.5836	1
40.62812	-96.5865	1
40.62818	-96.5866	2
40.62825	-96.5866	1
40.62831	-96.5866	1
40.62982	-96.584	1
40.62831	-96.5865	1
40.62982	-96.584	2
40.62832	-96.5866	1
40.62833	-96.5866	1
40.62835	-96.5865	1
40.62837	-96.5865	1
40.6284	-96.5866	1
40.62844	-96.5866	1
40.62984	-96.5842	1
40.62849	-96.5866	1
40.62984	-96.5842	1

Latitude	Longitude	Trees
40.6285	-96.5866	1
40.62986	-96.5841	1
40.62852	-96.5866	1
40.62851	-96.5865	1
40.6285	-96.5865	1
40.62849	-96.5865	1
40.63003	-96.5843	1
40.63003	-96.5843	1
40.63005	-96.5843	1
40.62864	-96.5864	1
40.62862	-96.5864	1
40.62844	-96.5858	1
40.62842	-96.5858	1
40.62842	-96.5858	1
40.6281	-96.5856	1
40.62809	-96.5856	1
40.62807	-96.5856	1
40.62808	-96.5856	1
40.62805	-96.5856	2
40.62806	-96.5856	1
40.63112	-96.5828	3
40.62807	-96.5855	1
40.62806	-96.5855	2
40.62803	-96.5856	2
40.63129	-96.5827	1
40.6314	-96.5828	1
40.63142	-96.5827	1
40.62776	-96.5858	1
40.62774	-96.5858	1
40.6278	-96.5858	1
40.63167	-96.5827	1
40.63166	-96.5827	1
40.63166	-96.5827	1
40.63175	-96.5827	2
40.63184	-96.5827	3
40.63183	-96.5827	2
40.63116	-96.5832	1
40.63118	-96.5832	1
40.63116	-96.5832	1
40.63023	-96.5838	1



Latitude	Longitude	Trees
40.63029	-96.5838	1
40.63037	-96.5838	1
40.63051	-96.5836	1
40.63057	-96.5837	1
40.63059	-96.5837	1
40.6306	-96.5836	1
40.63065	-96.5836	1
40.63068	-96.5837	1
40.6307	-96.5837	1
40.63078	-96.5836	4
40.63117	-96.5844	1
40.63114	-96.5843	1
40.63118	-96.5843	1
40.63126	-96.5844	1
40.63131	-96.5845	1
40.6313	-96.5845	1
40.63131	-96.5844	1
40.63128	-96.5844	1
40.63132	-96.5842	1
40.62867	-96.5864	1
40.6287	-96.5864	1
40.63125	-96.5837	1
40.62867	-96.5863	1
40.63126	-96.5836	1
40.63128	-96.5835	1
40.63129	-96.5835	1
40.62917	-96.5865	2
40.62917	-96.5865	1
40.62928	-96.5865	1
40.62927	-96.5865	1
40.62926	-96.5865	1
40.62924	-96.5865	1
40.62949	-96.5865	1
40.62951	-96.5865	1
40.62939	-96.5865	1
40.62881	-96.5862	1
40.62887	-96.5862	1
40.62888	-96.5862	1
40.62888	-96.5862	1
40.62886	-96.5864	1

Latitude	Longitude	Trees
40.62883	-96.5863	1
40.62883	-96.5863	1
40.6288	-96.5863	1
40.63157	-96.5842	1
40.63153	-96.5841	1
40.63155	-96.5841	1
40.63133	-96.5838	1
40.63151	-96.5838	1
40.63147	-96.5839	1
40.63159	-96.5838	1
40.63158	-96.5838	1
40.63158	-96.5838	1
40.63159	-96.5839	1
40.63158	-96.5839	1
40.63162	-96.5839	1
40.63164	-96.5839	1
40.63263	-96.5836	2
40.63263	-96.5837	1
40.63262	-96.5837	1
40.63265	-96.5837	1
40.63265	-96.5837	2
40.63265	-96.5837	1
40.6327	-96.5838	1
40.63257	-96.5839	1
40.63261	-96.5839	4
40.63262	-96.5839	1
40.63267	-96.5839	1
40.6327	-96.5839	1
40.63271	-96.5838	1
40.63277	-96.5838	1
40.63276	-96.5839	1
40.63281	-96.5839	1
40.63281	-96.5839	1
40.63282	-96.5838	1
40.63287	-96.5838	1
40.63289	-96.5838	1
40.63288	-96.5838	2
40.6329	-96.5839	1
40.63287	-96.584	1
40.63287	-96.5839	1

Latitude	Longitude	Trees
40.63294	-96.5839	1
40.63295	-96.5839	1
40.6329	-96.5836	1
40.63294	-96.5838	1
40.63297	-96.5839	1
40.63303	-96.5839	1
40.63302	-96.5838	1
40.63305	-96.5838	1
40.63307	-96.5838	1
40.63308	-96.5838	1
40.63309	-96.5838	1
40.63311	-96.5839	1
40.63312	-96.5839	1
40.63312	-96.5839	1
40.63314	-96.5839	1
40.63317	-96.5839	1
40.63316	-96.5839	1
40.63317	-96.584	1
40.63331	-96.5843	1
40.63369	-96.5842	1
40.63416	-96.5846	1
40.63691	-96.5859	1
40.63696	-96.5858	1
40.63701	-96.5856	1
40.63703	-96.5857	1
40.63705	-96.5856	1
40.63719	-96.5855	1
40.63724	-96.5857	4
40.63723	-96.5858	1
40.63723	-96.5859	1
40.6373	-96.586	1
40.63727	-96.5863	1
40.63719	-96.5861	1
40.63716	-96.5861	1
40.63703	-96.586	1
40.63693	-96.586	1
40.63689	-96.5859	1
40.63685	-96.5859	1
40.63685	-96.5858	1
40.63676	-96.5858	1

Latitude	Longitude	Trees
40.63664	-96.5857	1
40.63663	-96.5859	2
40.63655	-96.5858	1
40.63654	-96.5857	2
40.6365	-96.5857	1
40.63641	-96.5858	1
40.63638	-96.5858	1
40.63676	-96.5861	1
40.63686	-96.5862	1
40.63705	-96.5862	1
40.63725	-96.5863	1
40.63717	-96.5864	1
40.63716	-96.5864	1
40.63707	-96.5863	2
40.63705	-96.5865	1
40.63718	-96.5867	1
40.63695	-96.5863	1
40.63663	-96.5861	1
40.63675	-96.586	2
40.63677	-96.5861	1
40.63675	-96.5861	1
40.63669	-96.586	1
40.6366	-96.5861	1
40.63649	-96.5861	1
40.63656	-96.5862	1
40.63662	-96.5863	1
40.63654	-96.5864	1
40.63642	-96.5864	1
40.63648	-96.5866	1
40.63648	-96.5866	1
40.63654	-96.5867	1
40.63662	-96.5866	1
40.63675	-96.5865	1
40.63675	-96.5865	1
40.63686	-96.5866	1
40.63687	-96.5867	1
40.63691	-96.5867	2
40.63713	-96.5867	1
40.6365	-96.5868	1
40.63634	-96.5868	1

Latitude	Longitude	Trees
40.6363	-96.5869	1
40.63631	-96.5869	1
40.63653	-96.5871	2
40.63649	-96.5872	1
40.63685	-96.587	1
40.63694	-96.587	1
40.6369	-96.5872	2
40.63692	-96.5872	1
40.63693	-96.5872	1
40.63695	-96.5872	1
40.63698	-96.5872	1
40.63717	-96.5871	1
40.63713	-96.5872	1
40.63717	-96.5875	1
40.63718	-96.5876	1
40.8622	-96.6449	3
40.86238	-96.6452	1