

# **Standing Bear Brushing Projects Update**

Jehnsen Lebsock, Aaron Blank, Jake Werner, Matthew Perrion

Southeast District, Fisheries Division

Nebraska Game and Parks Commission

In January 2025 NGPC district biologist and a group of volunteers from the NE-B.A.S.S. club were able to cut and place 240 cedar trees lakewide. Below is an overview of the projects including pictures from the project, map locations of the structures, and GIS coordinates where structures were placed. (Cedar tree coordinates are an approximate measure and serve as a general guide for tree locations as trees may move with the ice thaw)

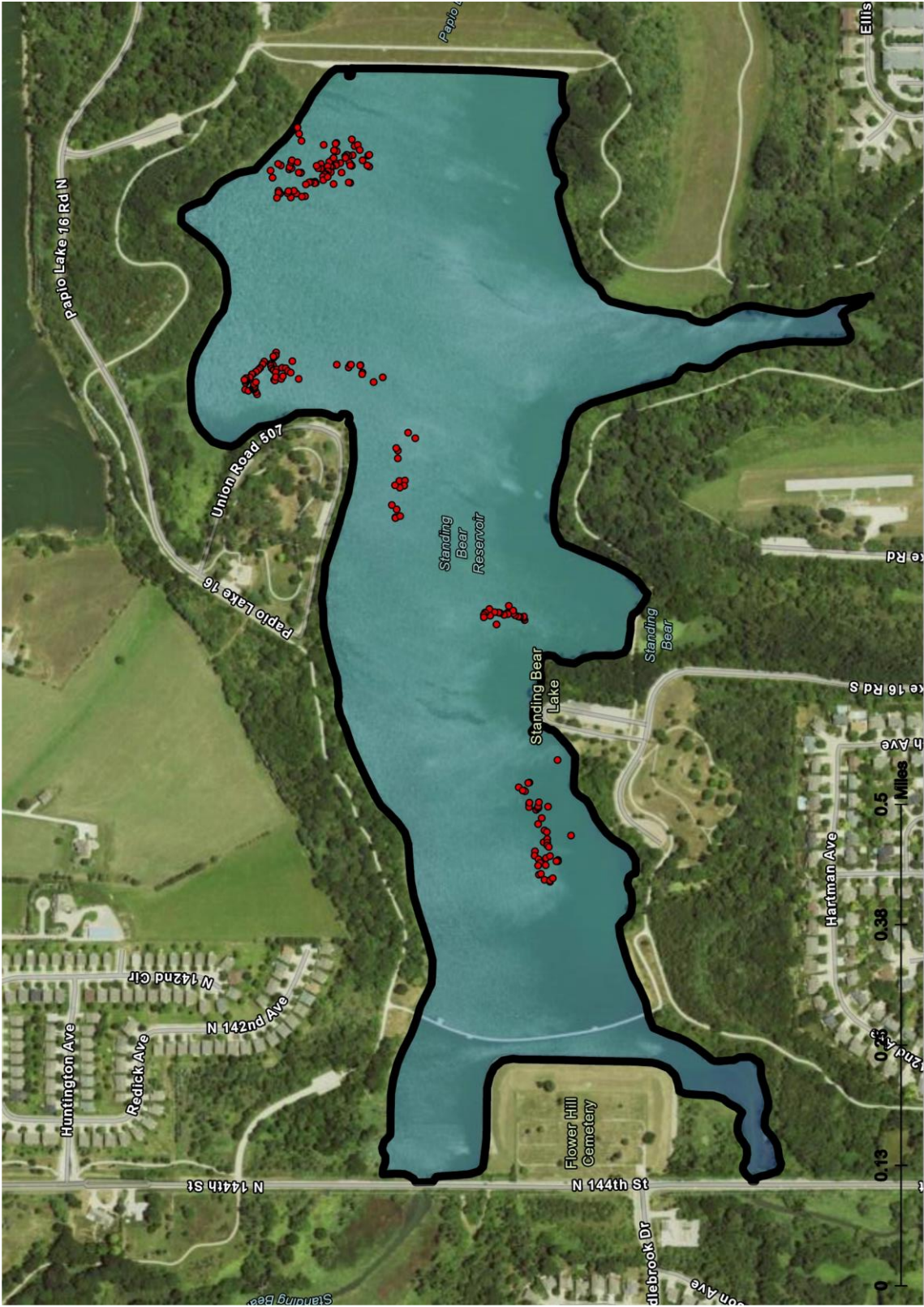












Standing Bear Lake Cedar Tree Locations

Latitude	Longitude	Trees
41.31659	-96.1237	1
41.31662	-96.1236	1
41.3165	-96.1235	1
41.31653	-96.1235	1
41.3164	-96.1236	1
41.31637	-96.1236	1
41.3164	-96.1236	1
41.31638	-96.1235	1
41.31637	-96.1235	1
41.31631	-96.1235	1
41.31626	-96.1232	1
41.31629	-96.1231	1
41.31631	-96.123	1
41.31567	-96.1233	1
41.31569	-96.1232	1
41.31563	-96.1232	1
41.31561	-96.1233	1
41.31551	-96.1234	1
41.3155	-96.1234	1
41.3155	-96.1236	1
41.31552	-96.1235	1
41.31557	-96.1235	1
41.3157	-96.1235	1
41.31571	-96.1235	1
41.3157	-96.1236	1
41.31572	-96.1235	1
41.31569	-96.1234	1
41.31573	-96.1234	1
41.31575	-96.1234	1
41.31577	-96.1234	1
41.31577	-96.1234	1
41.31583	-96.1235	1
41.31587	-96.1233	1
41.3159	-96.1233	1
41.31587	-96.1232	1
41.31588	-96.1232	1
41.31601	-96.1232	1
41.31592	-96.1235	1
41.31588	-96.1235	1
41.31587	-96.1235	1

41.31592	-96.1236	1
41.31594	-96.1236	1
41.31595	-96.1235	1
41.3159	-96.1234	1
41.31605	-96.1235	1
41.31597	-96.1236	1
41.31581	-96.1237	1
41.31571	-96.1235	1
41.31571	-96.1238	1
41.31573	-96.1238	1
41.3159	-96.1238	1
41.31593	-96.1236	1
41.31596	-96.1236	1
41.31598	-96.1237	1
41.316	-96.1237	1
41.316	-96.1237	1
41.316	-96.1237	1
41.31602	-96.1237	1
41.31602	-96.1238	1
41.31597	-96.1237	1
41.31604	-96.1236	1
41.31608	-96.1236	1
41.3161	-96.1236	1
41.31611	-96.1238	1
41.3161	-96.1238	1
41.31611	-96.1238	1
41.31613	-96.1238	1
41.31612	-96.1238	1
41.31616	-96.1238	1
41.31618	-96.1238	1
41.31621	-96.1238	1
41.31627	-96.1237	1
41.31627	-96.1237	1
41.3163	-96.1237	1
41.31622	-96.124	1
41.31626	-96.124	1
41.31632	-96.124	1
41.31635	-96.1239	1
41.31639	-96.124	1
41.31642	-96.124	1
41.31641	-96.1239	1

41.31652	-96.1239	1
41.31651	-96.124	1
41.31652	-96.1239	1
41.31652	-96.124	1
41.31654	-96.124	1
41.31668	-96.1265	1
41.3167	-96.1265	1
41.31673	-96.1266	1
41.31674	-96.1266	1
41.31675	-96.1266	1
41.31678	-96.1266	1
41.31682	-96.1267	1
41.31682	-96.1267	1
41.31682	-96.1267	1
41.31684	-96.1267	1
41.31689	-96.1268	1
41.31688	-96.1268	1
41.31689	-96.1267	1
41.3169	-96.1268	1
41.3169	-96.1268	1
41.31691	-96.1268	1
41.3169	-96.1269	1
41.31686	-96.1269	1
41.31676	-96.127	1
41.31678	-96.127	1
41.3168	-96.1269	1
41.31682	-96.1269	1
41.31681	-96.1269	1
41.31681	-96.1269	1
41.3168	-96.1269	1
41.31679	-96.1269	1
41.31679	-96.1269	1
41.3168	-96.1268	1
41.31678	-96.1268	1
41.31658	-96.1268	1
41.31657	-96.1268	1
41.31655	-96.1264	1
41.31656	-96.1264	1
41.31658	-96.1264	1
41.31658	-96.1264	1
41.31661	-96.1265	1

41.3166	-96.1265	1
41.31659	-96.1265	1
41.31661	-96.1266	1
41.3166	-96.1266	1
41.31658	-96.1266	1
41.31658	-96.1266	1
41.31654	-96.1266	1
41.31655	-96.1267	1
41.31656	-96.1267	1
41.31649	-96.1268	1
41.31648	-96.1267	1
41.31648	-96.1266	1
41.31637	-96.1265	1
41.31644	-96.1266	1
41.31642	-96.1266	1
41.31639	-96.1267	1
41.3163	-96.1268	1
41.31587	-96.1265	1
41.31573	-96.1266	1
41.31573	-96.1266	1
41.31572	-96.1265	1
41.31571	-96.1265	1
41.3156	-96.1265	1
41.3156	-96.1265	1
41.31557	-96.1267	1
41.31558	-96.1267	1
41.31545	-96.1268	1
41.31535	-96.1267	1
41.31506	-96.1276	1
41.31498	-96.1276	1
41.31518	-96.1278	1
41.3152	-96.1278	1
41.31518	-96.1279	1
41.31516	-96.1283	1
41.3151	-96.1283	1
41.31511	-96.1284	1
41.31515	-96.1284	1
41.31521	-96.1283	1
41.31519	-96.1287	1
41.31525	-96.1286	1
41.31521	-96.1288	1



41.31521	-96.1288	1
41.31515	-96.1288	1
41.31375	-96.1304	1
41.31375	-96.1303	1
41.31375	-96.1303	1
41.3138	-96.1303	1
41.31382	-96.1303	1
41.31385	-96.1303	1
41.31387	-96.1303	1
41.31387	-96.1303	1
41.31388	-96.1302	1
41.31393	-96.1302	1
41.31394	-96.1303	1
41.31394	-96.1303	1
41.31393	-96.1303	1
41.31406	-96.1304	1
41.31398	-96.1303	1
41.31402	-96.1303	1
41.31404	-96.1303	1
41.31409	-96.1303	1
41.31413	-96.1303	1
41.31414	-96.1302	1
41.31419	-96.1303	1
41.31419	-96.1303	1
41.31421	-96.1303	1
41.31421	-96.1303	1
41.31337	-96.1325	1
41.31369	-96.1328	1
41.3137	-96.1328	1
41.31381	-96.1329	1
41.31375	-96.1329	1
41.31374	-96.1329	1
41.31377	-96.1329	1
41.3137	-96.1331	1
41.3137	-96.1332	1
41.31369	-96.1331	1
41.31362	-96.1332	1
41.31359	-96.1332	1
41.3136	-96.1332	1
41.31359	-96.1332	1
41.31359	-96.1332	1

41.31358	-96.1331	1
41.31348	-96.1332	1
41.31355	-96.1333	1
41.31359	-96.1334	1
41.31352	-96.1335	1
41.31322	-96.1336	1
41.3135	-96.1336	1
41.31353	-96.1337	1
41.31349	-96.1337	1
41.31349	-96.1337	1
41.31349	-96.1338	1
41.31347	-96.1338	1
41.31363	-96.1338	1
41.31363	-96.1339	1
41.31359	-96.134	1
41.31357	-96.134	1
41.3135	-96.1339	1
41.31346	-96.1339	1
41.31337	-96.134	1
41.31337	-96.134	1
41.31339	-96.134	1
41.31351	-96.1341	1
41.31359	-96.1341	1
41.31358	-96.1342	1
41.31356	-96.1342	1
41.31352	-96.1343	3
41.31346	-96.1343	1
41.31345	-96.1343	1
41.31346	-96.1343	1
41.31343	-96.1342	1