

## 2023 Fall Survey Summary Canyon Reservoirs



Jeffrey, Midway, Gallagher and Plum Creek Reservoirs are referred to as the “Canyon Reservoirs”. They are located along the Central Nebraska Public Power and Irrigation District’s (CNPPID) supply canal between Brady and Lexington. These reservoirs experience high flow rates that allow for unimpeded downstream fish movement. This characteristic makes them challenging and unique fisheries. Access [CNPPID's Land-use Maps](#) and [NGPC's Public Fishing Areas Map](#) to investigate further.

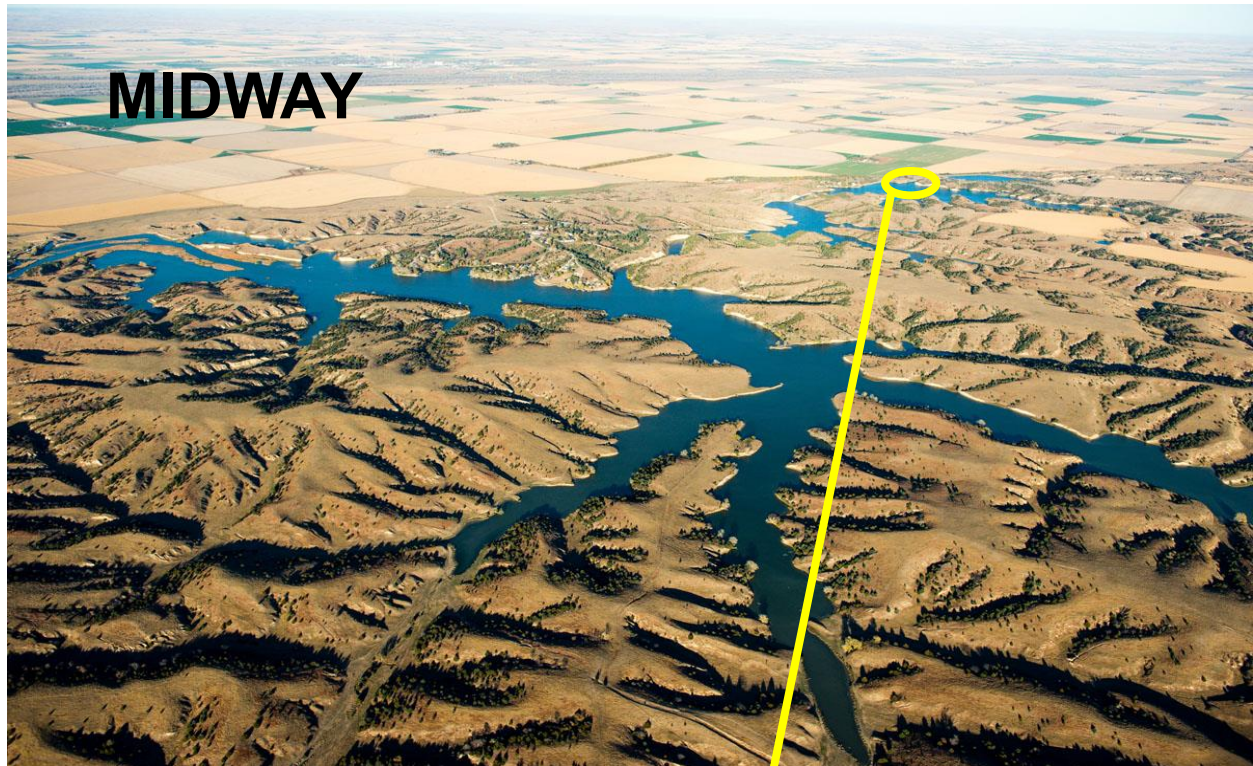
The Canyon Reservoirs are sampled using experimental gill nets, a method commonly used to sample species found primarily in open water, such as walleye, white bass, channel catfish and hybrid striped bass. In addition to gill nets, trap nets are used to sample shoreline-oriented species such as crappie. For more information about survey methods access the [Survey Says](#) article. Currently, two Canyon Reservoirs are surveyed per year. During 2023, Gallagher and Plum Creek Reservoirs were surveyed.





Jeffrey is a 900 acre reservoir located south of Brady. To visit this site from Interstate 80, take Exit 199, drive south 2.8 miles on S Banner Rd, turn west on Brady Moorfield Rd and travel 1.35 miles until WMA turn on right and travel a short distance downhill where a public access boat ramp exists. For more layout details access [NGPC's Public Fishing Areas Map](#).





Midway is a 609 acre reservoir south of Cozad. To visit this site from Interstate 80, take Exit 222, drive south approximately 4 miles on Hwy 21, turn east on Rd 757 and travel 2 miles and turn south on Rd 418 and travel 0.4 miles, turn east on Cedar Point Rd and travel 0.2 miles. The public access ramp site is located North of the canal bridge. For more layout details access [NGPC's Public Fishing Areas Map](#). Boat ramp and dock improvements are planned for this site. The timeframe for construction is tentative but may occur during 2024.

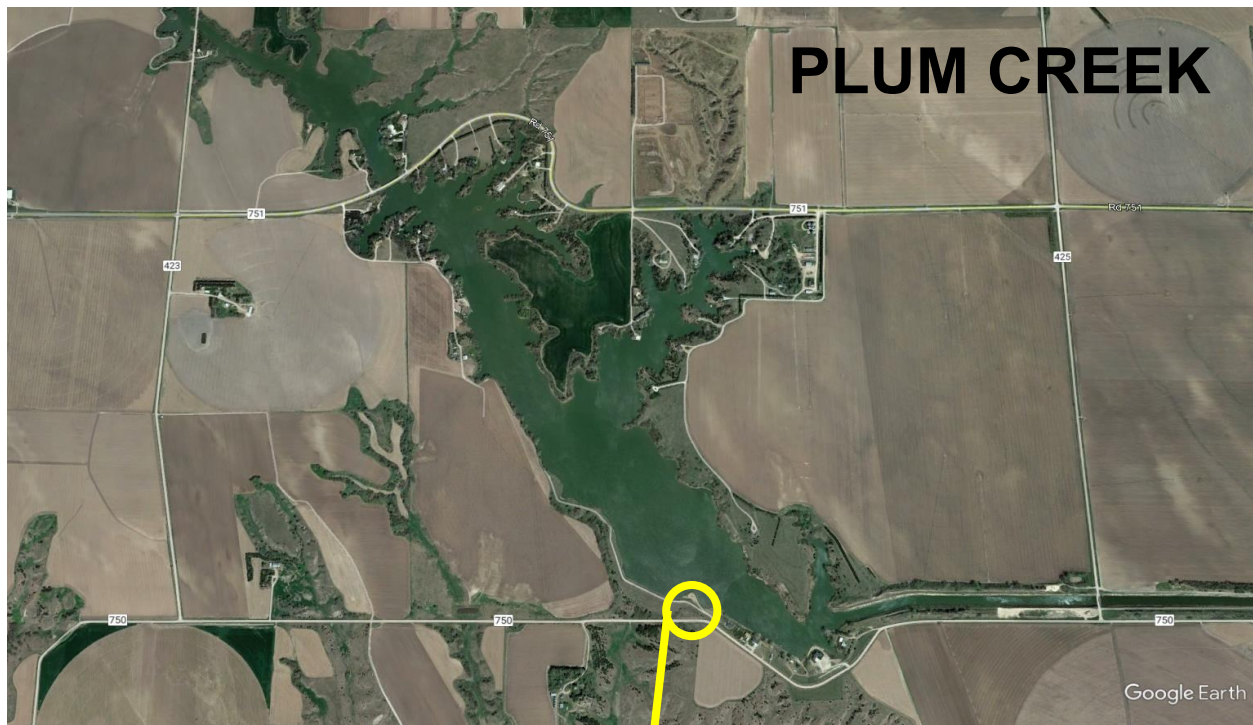


# GALLAGHER

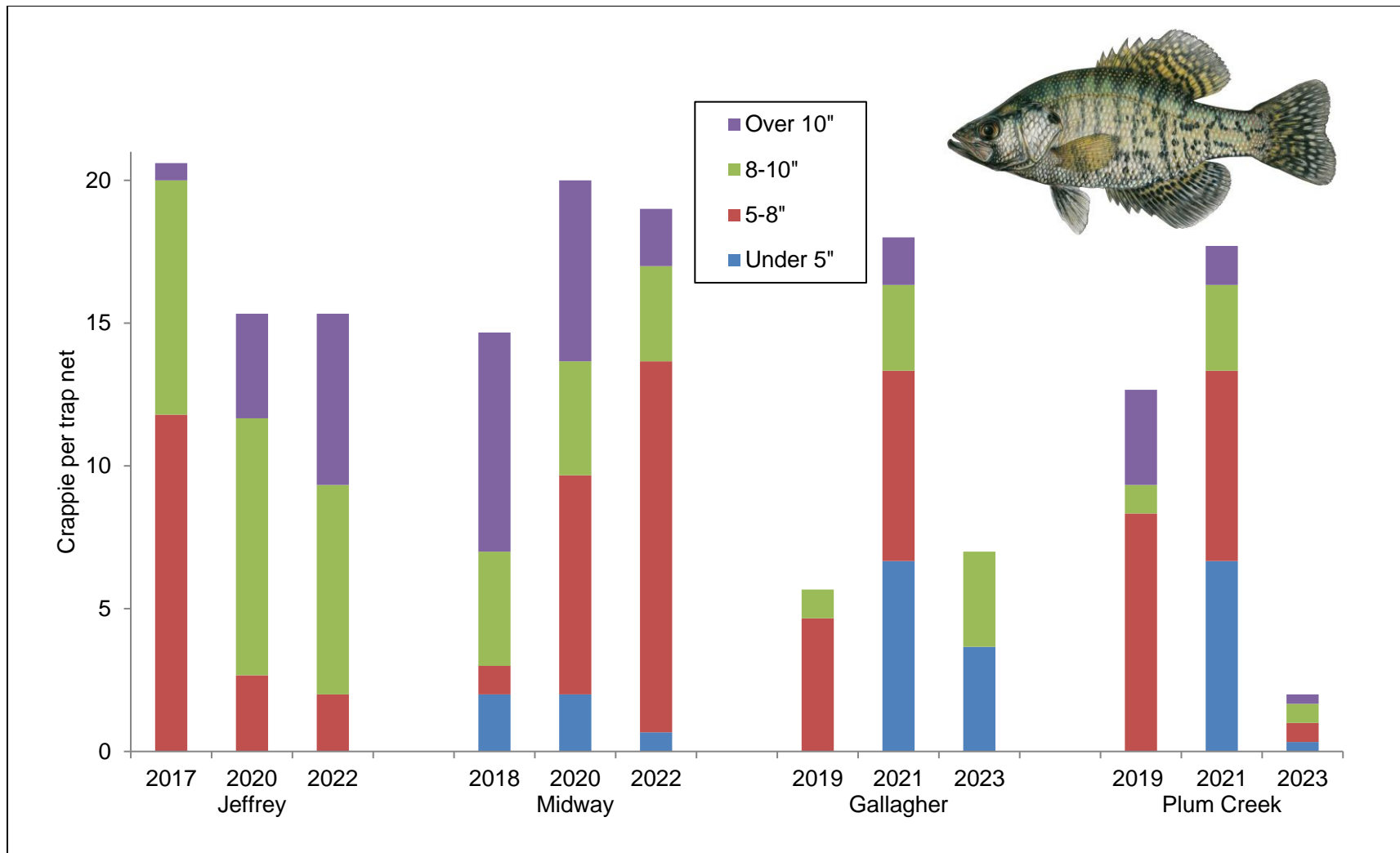


Gallagher Canyon Reservoir is a 182-acre reservoir located approximately 14 miles south of Cozad, NE. To visit this site from I-80, take Exit 222, travel 9 miles south on Hwy 21, turn east on 751 and travel approximately 2 miles, turn North on gravel road 422 for 1.5 miles and then turn west for approximately 2.5 miles on a road that navigates through a row crop field. Boat ramp improvements are planned for this site. The timeframe for construction is tentative but may occur during 2024.

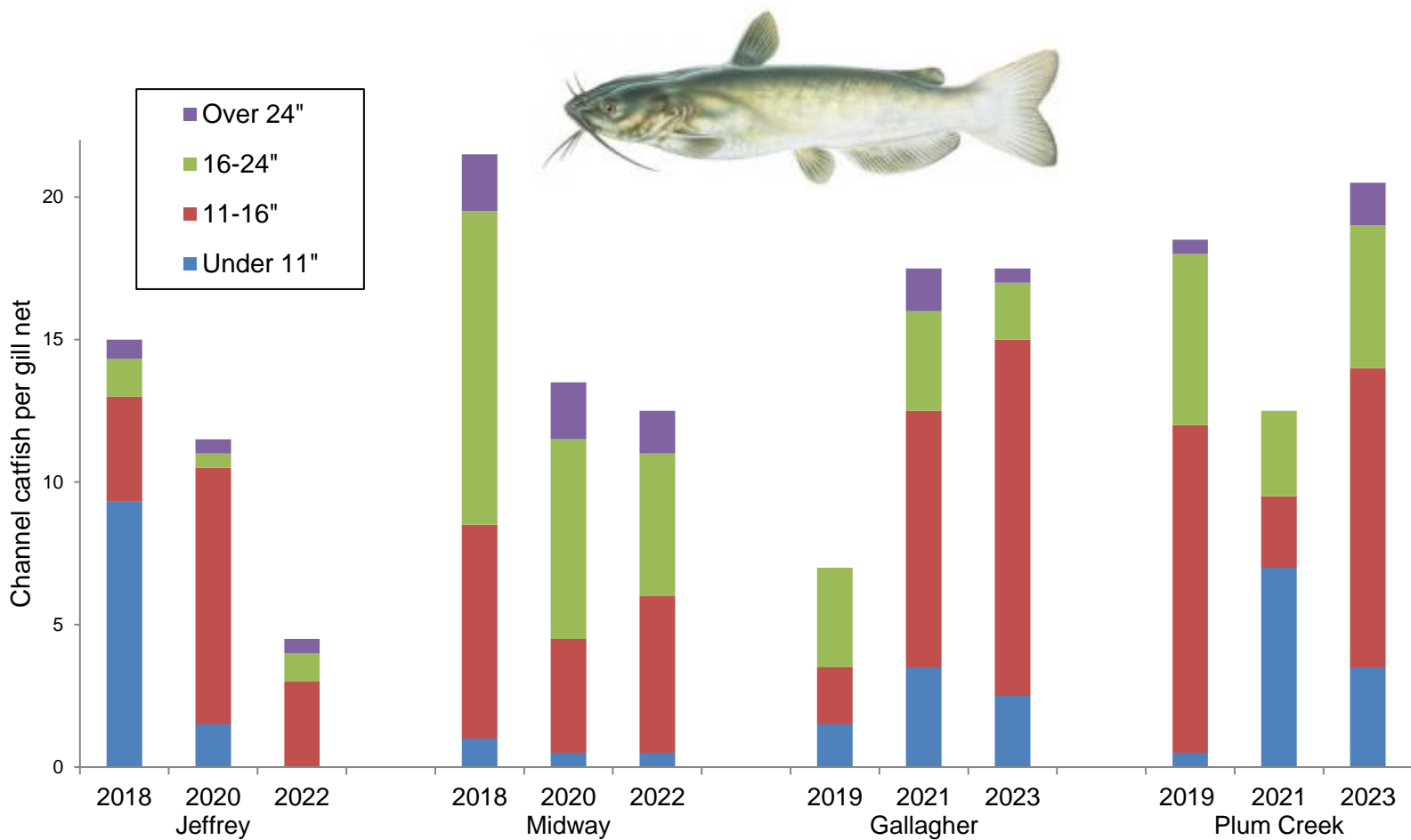




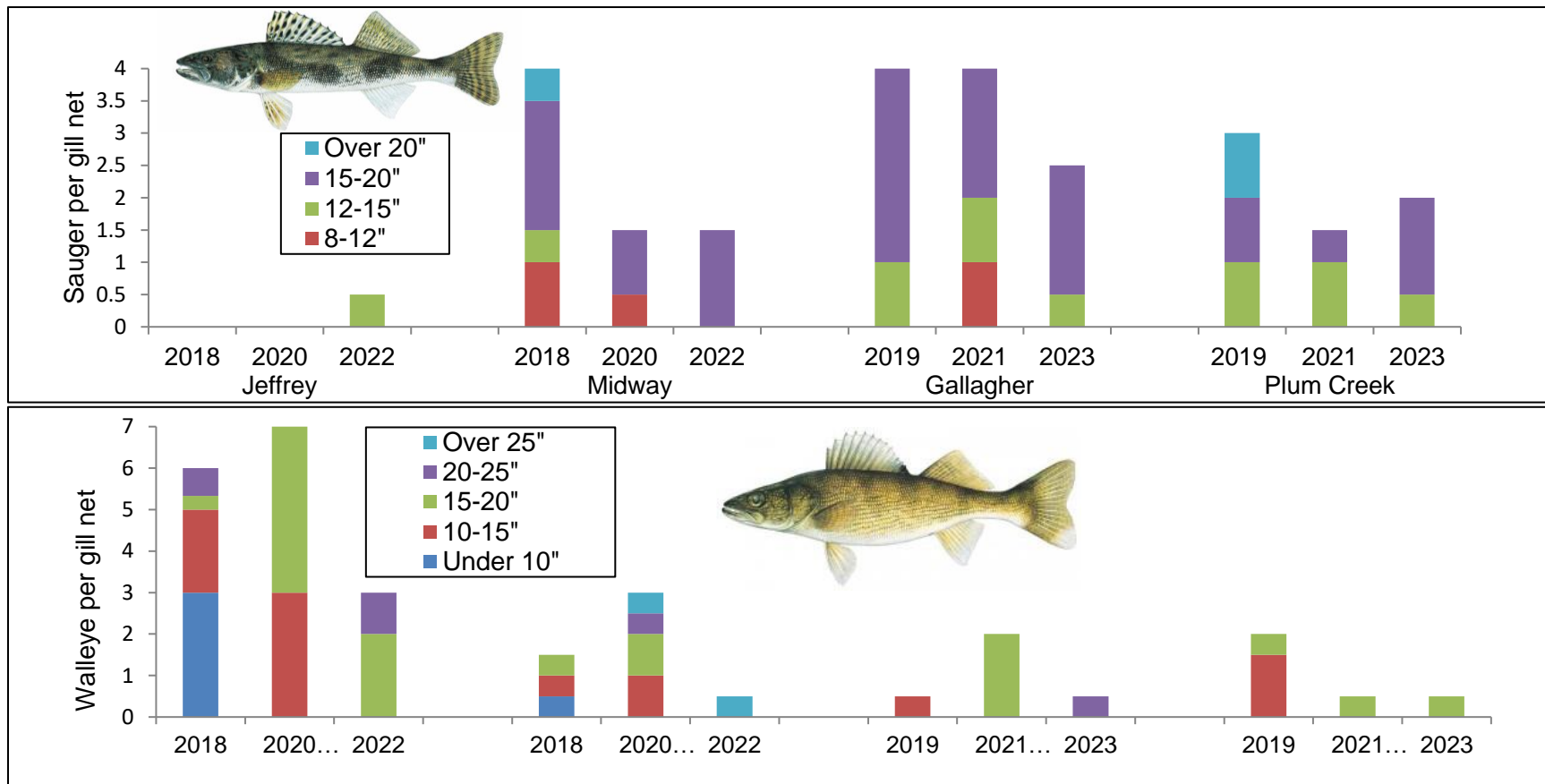
Plum Creek Canyon Reservoir is a 252-acre reservoir south of Cozad and directly upstream of Johnson. To visit this site from Interstate 80, take Exit 222, travel south on Hwy 21 for 9 miles, turn east on Rd 751 and travel approximately 3 miles, turn south on gravel road 423 and travel 1 mile, turn east on gravel road 750 and travel approximately 1 mile before turning North into Plum Creek Canyon WMA. For more layout details access [NGPC's Public Fishing Areas Map](#).



**Crappie** do well as the Canyon Reservoirs possess quality cove habitats. The size structures observed in their populations indicate self-sustaining populations. Survey data at Gallagher was composed of 95% white crappie, while at Plum Creek 50% were white crappie. Although 2023's survey didn't exhibit high values the presence of small crappie bodes well.



**Channel catfish** have excellent populations in the Canyon Reservoirs. These populations are typically some of the largest in Nebraska. The longest channel catfish sampled at Gallagher was 24.5" and 29" at Plum Creek. In addition to channel catfish, flathead catfish offer substantial angling opportunities at these sites. Their populations rely on natural recruitment.



**Sauger** and **walleye** are present in each Canyon Reservoir. Sauger are well adapted to habitat conditions present in the Canyon Reservoirs and do best in Midway, Gallagher and Plum Creek. Natural recruitment of sauger has not been identified. Shore angling for sauger is popular below check structures along the canal. The walleye and sauger regulation at the Canyon Reservoirs includes a daily bag of 4 (in combination) with a 15 inch minimum length limit and no more than one over 22 inches. Access NGPC's online [Fish Identification Tool](#) for information.



## Stockings (2024\* requests are tentative)

### Jeffrey

| <u>Year</u> | <u>Walleye</u> | <u>Hybrid Striped Bass</u> |
|-------------|----------------|----------------------------|
| 2020        | 27,529-1"      | 5,000-1.25"                |
| 2021        | 29,642-1"      |                            |
| 2022        | 27,700-1.2"    |                            |
| 2023        | 27,500-1"      |                            |
| 2024*       | 27,500-1.5"    | 8,250-2"                   |

### Midway

| <u>Year</u> | <u>Sauger</u>              | <u>Hybrid Striped Bass</u> | <u>Blue catfish</u> |
|-------------|----------------------------|----------------------------|---------------------|
| 2020        | 471,345-fry & 19,165-1"    | 3,000-1.25"                |                     |
| 2021        | 374,233-fry & 19,225-1.25" |                            |                     |
| 2022        | 427,400-fry&28,991-1.5"    |                            | 3,845-5.5"          |
| 2023        | 384,500-fry&19,225-1.5"    |                            | 6,090-6"            |
| 2024*       |                            |                            |                     |

### Gallagher

| <u>Year</u> | <u>Sauger</u>            | <u>Hybrid Striped Bass</u> | <u>Blue catfish</u> |
|-------------|--------------------------|----------------------------|---------------------|
| 2020        | 145,000-fry & 5,780-1"   | 900-1.25"                  |                     |
| 2021        | 100,455-fry              |                            |                     |
| 2022        | 77,000-fry & 5,925-1.25" |                            |                     |
| 2023        | 136,100-fry&12,000-1.5"  |                            | 1,185-5.5"          |
| 2024*       | 118,500-fry&5,925-1.5"   |                            | 1,820-6"            |

### Plum Creek

| <u>Year</u> | <u>Sauger</u>             | <u>Hybrid Striped Bass</u> | <u>Blue catfish</u> |
|-------------|---------------------------|----------------------------|---------------------|
| 2020        | 155,000-fry & 6,692-1.25" | 60,000-fry&1,260-1.25"     |                     |
| 2021        | 100,455-fry               |                            |                     |
| 2022        | 6,950-1.25"               |                            |                     |
| 2023        | 176,370-fry&13,050-1.5"   |                            | 1,390-5.5"          |
| 2024*       | 139,000-fry&6,950-1.5"    |                            | 1,390-6"            |

# Aquatic Invasive Species (AIS)

**Bigheaded carp** have found their way into every major tributary of the Missouri River in Nebraska, including the Platte, Elkhorn, Loup and Nemaha rivers. Obstacles to their continued spread are vital as these species cause substantial damage. These obstacles include physical structures and angler awareness.



**Zebra Mussel** distribution is expanding, especially in Kansas and South Dakota. Currently the only waterbodies in Nebraska with confirmed zebra mussel infestations are the Missouri River, Lewis and Clark Lake, Lake Yankton, Offutt Base Lake and a private waterbody (Beaver Lake).

**Asian clam** is commonly confused for zebra mussel and are ubiquitous in many locations. This mussel is listed as a Category II Priority Aquatic Invasive Species by NGPC. This indicates that they are highly unwanted and all efforts should be taken to prevent their expansion.



**To report AIS utilize 402-471-7602 or [ngpc.ais@nebraska.gov](mailto:ngpc.ais@nebraska.gov)**

If you have questions or concerns about the Canyon Reservoir fishery please contact  
North Platte Southwest District office at 308-535-8025 / 308-221-6242

OR

Kearney Service Center at 308-865-5331