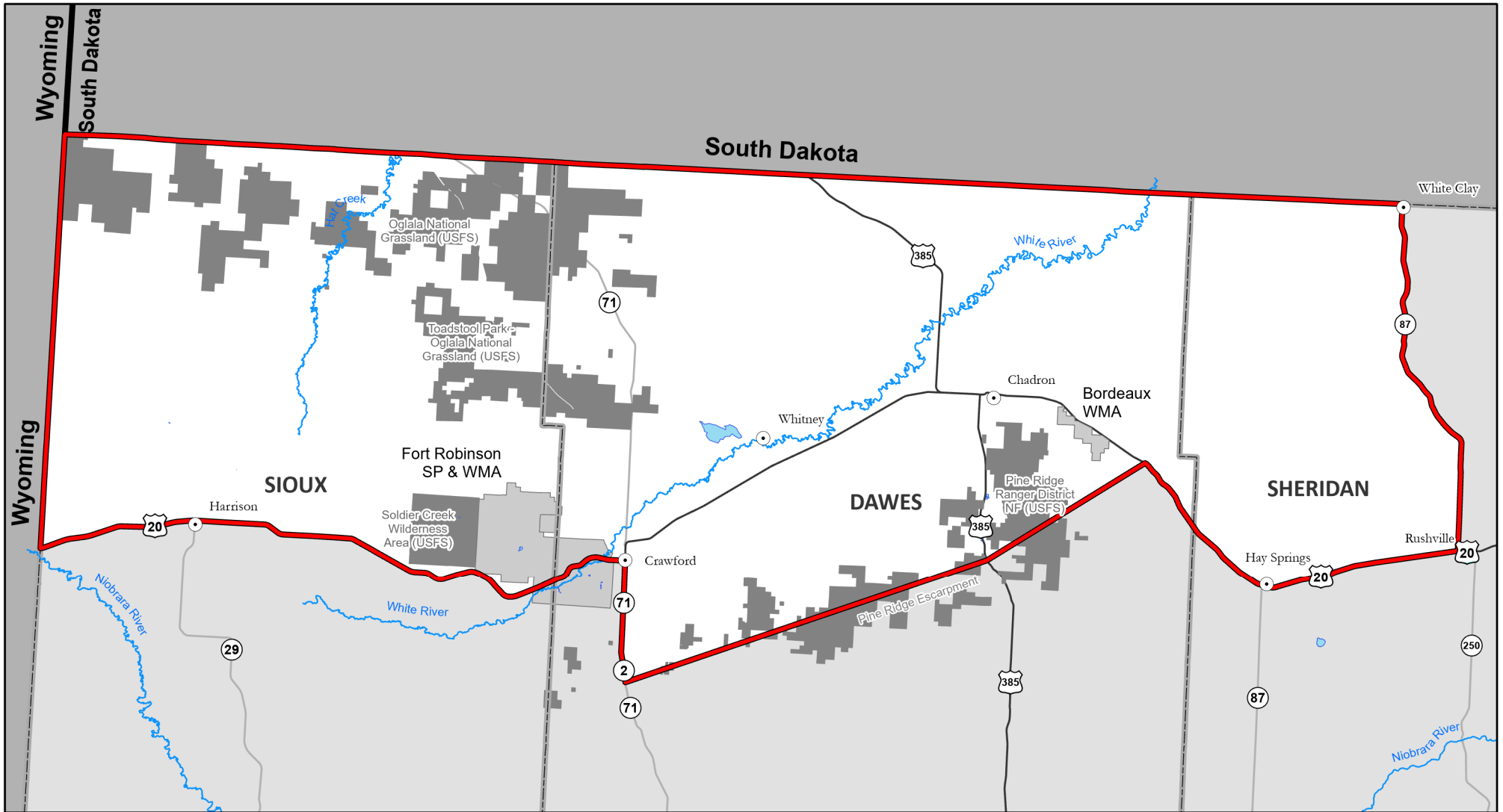


# 2022 North Sioux Antelope Unit



**NORTH SIOUX MANAGEMENT UNIT DESCRIPTION** - Those parts of Dawes, Sioux, and Sheridan counties north and west of a line beginning at the junction of U.S. Hwy. 20 and the Nebraska- Wyoming state line, then east on U.S. Hwy. 20 to NE Hwy. 2, then south on NE Hwy. 2 to the Pine Ridge escarpment to U.S. Hwy. 20 (10 miles SE of Chadron), then east on U.S. Hwy. 20 to NE Hwy. 87, then north to the Nebraska-South Dakota state line. Fort Robinson State Park and Fort Robinson Wildlife Management Area in Sioux and Dawes counties are excluded from this unit.

**Special Unit Restriction** - Firearm antelope hunting on Fort Robinson State Park and Fort Robinson WMA is prohibited.