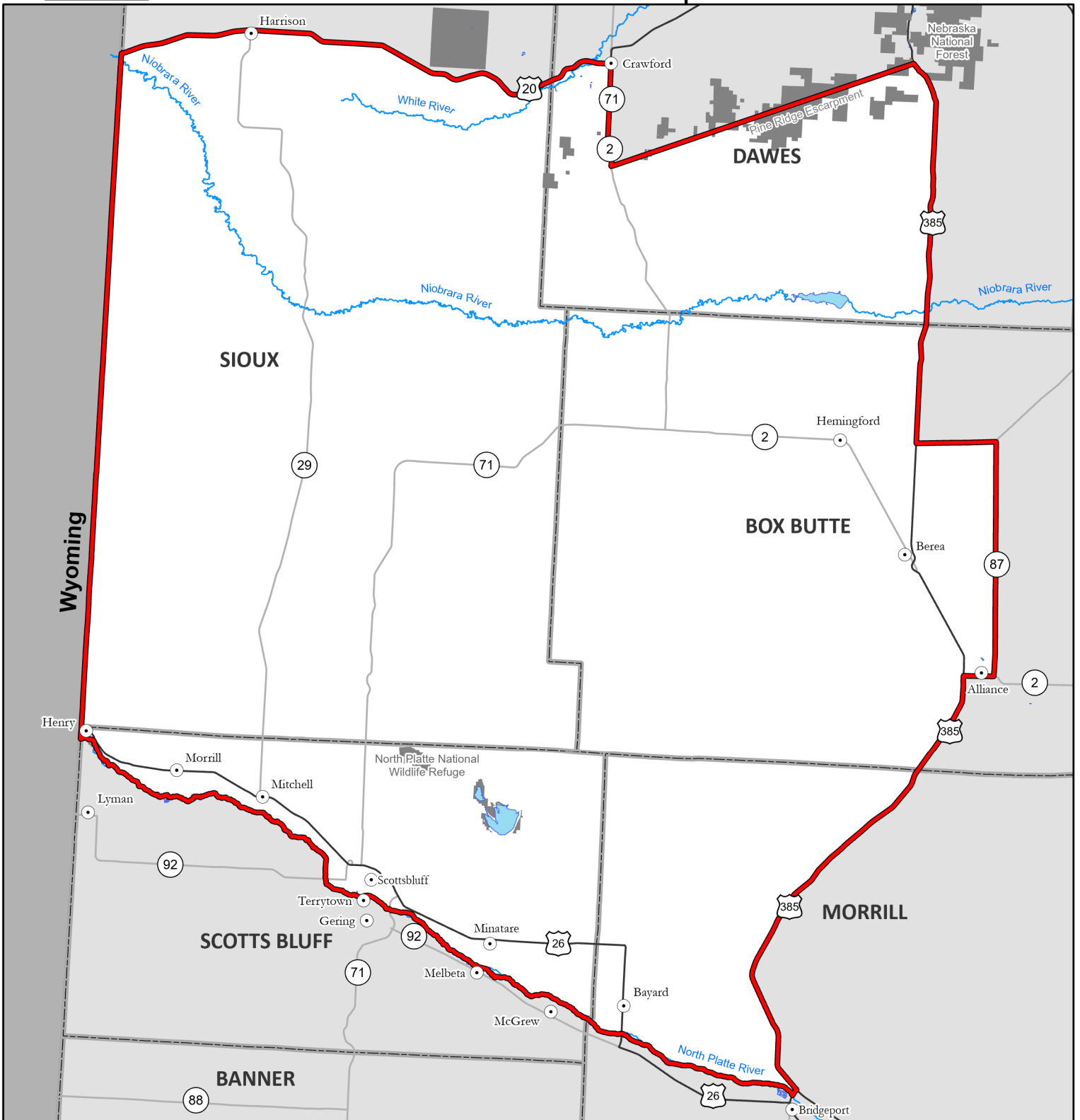
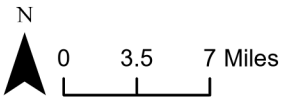


2022 Box Butte West and Box Butte West Late Antelope Units



BOX BUTTE WEST AND BOX BUTTE WEST LATE LATE MANAGEMENT UNIT DESCRIPTION - Those parts of Box Butte, Dawes, Morrill, Scotts Bluff and Sioux counties included within the following boundaries: from the junction of U.S. Hwy. 20 with the Nebraska-Wyoming state line, then east on U.S. Hwy. 20 to U.S. Hwy. 385, then south on U.S. Hwy. 385 to State Conn. Link L-7E, then east on State Conn. Link L-7E to NE Hwy. 87, then south on NE Hwy. 87 to NE Hwy. 2, then west on NE Hwy. 2 to U.S. Hwy. 385, then south on U.S. Hwy. 385 to the North Platte River, then west along the North Platte River to the Nebraska-Wyoming state line, except that part of Dawes County south of U.S. Hwy. 20, east of NE Hwy. 2, west of U.S. Hwy. 385, and north of the Pine Ridge escarpment.