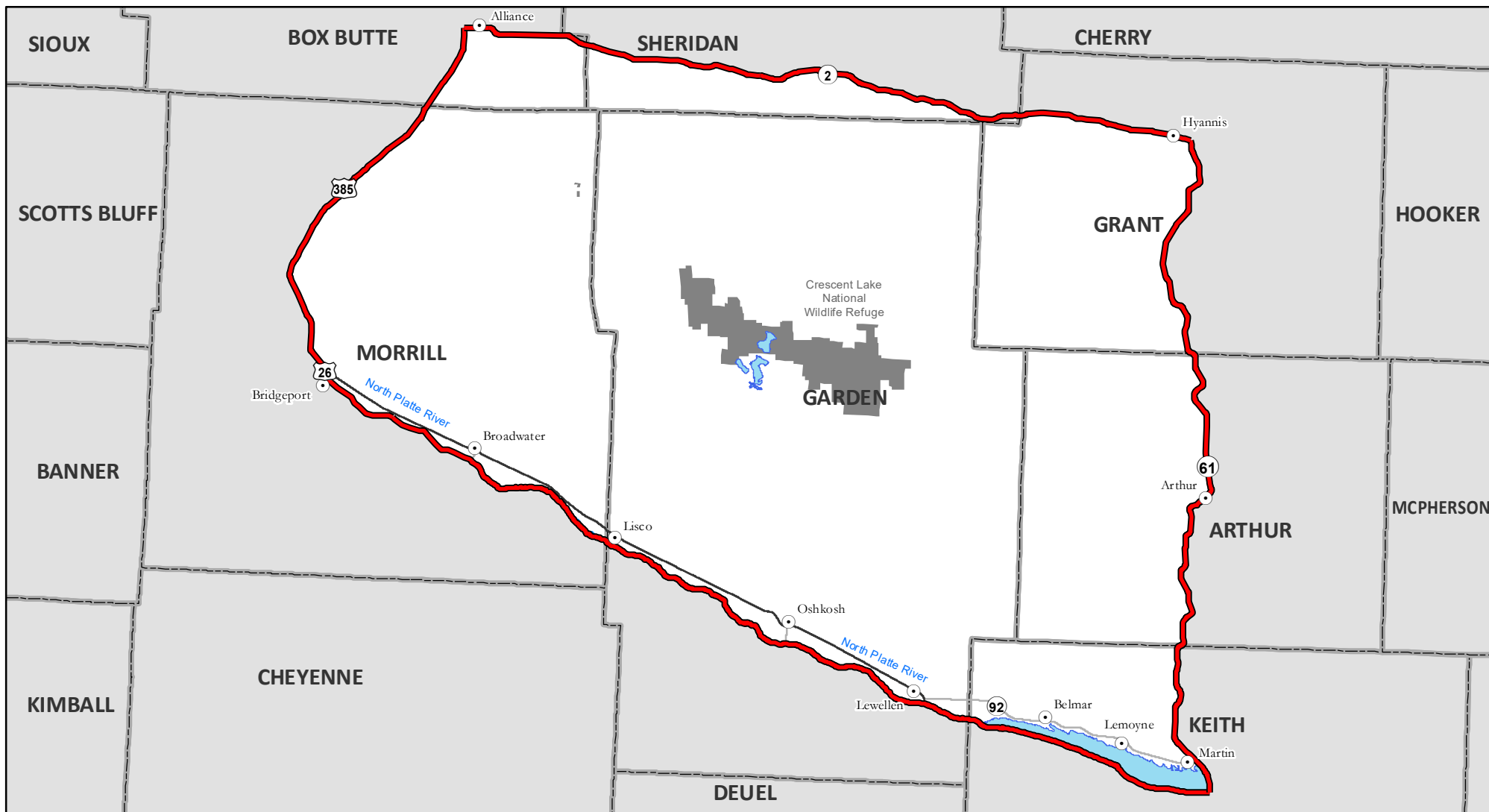


2018 Garden & Garden Late Antelope Unit



MANAGEMENT UNIT DESCRIPTION - Those parts of Arthur, Box Butte, Garden, Grant, Keith, Morrill and Sheridan counties south of Neb. Hwy. 2, west of Neb. Hwy. 61, north of Lake McConaughy and the North Platte River, and east of U.S. Hwy. 385.

NOTE -

- The Crescent Lake National Wildlife Refuge in Garden County is closed to antelope hunting.
- Garden and Garden Late boundaries are the same.