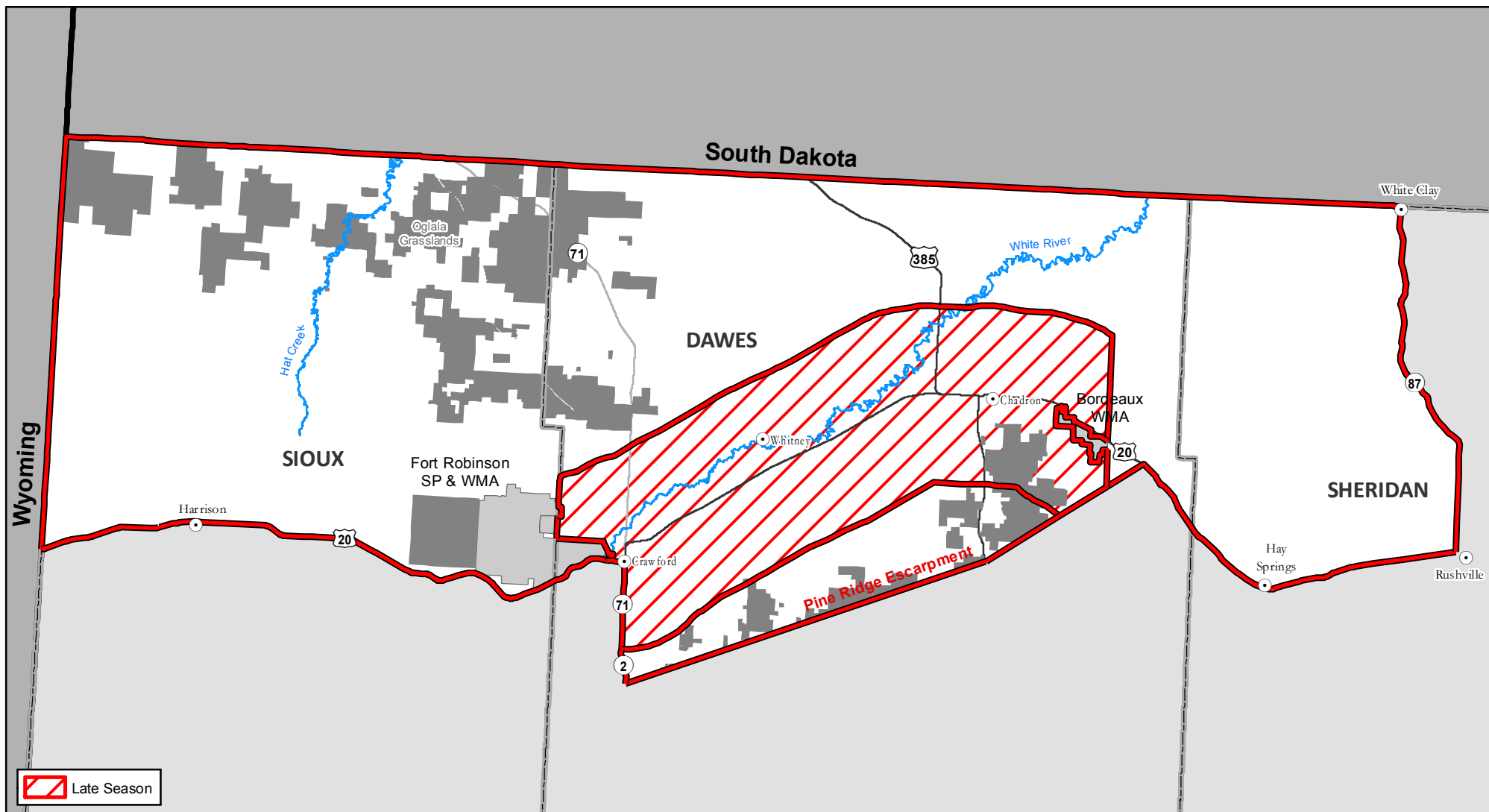


2017 North Sioux & North Sioux Late Antelope Units



NORTH SIOUX MANAGEMENT UNIT DESCRIPTION - Those parts of Dawes, Sioux and Sheridan counties north and west of a line beginning at the junction of U.S. Hwy. 20 and the Nebraska-Wyoming border, then east on U.S. Hwy. 20 to Neb. Hwy. 2, then south on Neb. Hwy. 2 to the Pine Ridge escarpment, then east along the Pine Ridge escarpment to U.S. Hwy. 20, then east on U.S. Hwy. 20 to Neb. Hwy. 87, then north to the Nebraska-South Dakota border.

NOTE - Fort Robinson State Park and Fort Robinson Wildlife Management Area in Sioux and Dawes counties are closed to antelope hunting.

NORTH SIOUX LATE MANAGEMENT UNIT DESCRIPTION - That portion of the North Sioux Unit within 5 miles north and 5 miles south of U.S. Hwy. 20, between the Dawes-Sioux county line on the west and the Davenport County Road on the east.

NOTE - Fort Robinson State Park, Fort Robinson Wildlife Management Area and Bordeaux Creek WMA are excluded from this unit.