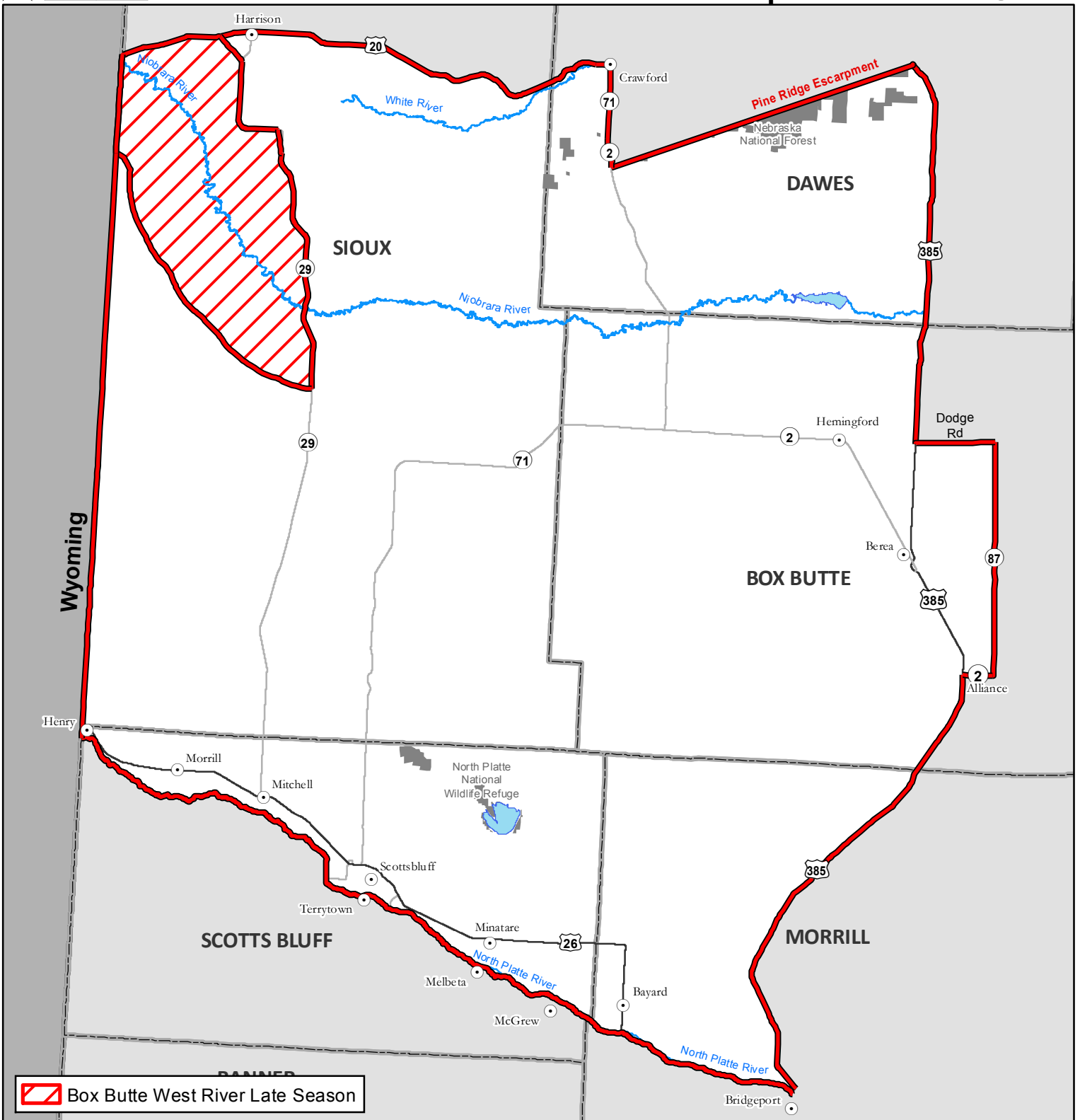
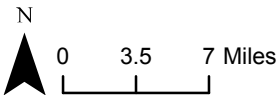


# 2016 Box Butte West, Box Butte West Late and Box Butte West River Late Antelope Units



 Box Butte West River Late Season

**BOX BUTTE WEST AND BOX BUTTE WEST LATE MANAGEMENT UNIT DESCRIPTION** - Those parts of Box Butte, Sioux, Scotts Bluff, Morrill and Dawes counties included within the following boundaries: from the junction of U.S. Hwy. 20 with the Nebraska-Wyoming state line, then east on U.S. Hwy. 20 to U.S. Hwy. 385, then south on U.S. Hwy. 385 to State Conn. Link L-7E, then east on State Conn. Link L-7E to Neb. Hwy. 87, then south on Neb. Hwy. 87 to Neb. Hwy. 2, then west on Neb. Hwy. 2 to U.S. Hwy. 385, then south on U.S. Hwy. 385 to the North Platte River, then west along the North Platte River to the Nebraska-Wyoming state line, except that part of Dawes County south of U.S Hwy. 20, east of Neb. Hwy. 2, west of U.S. Hwy. 385, and north of the Pine Ridge escarpment.

**BOX BUTTE WEST RIVER LATE UNIT DESCRIPTION** - That portion of the Box Butte West Unit within 5 miles of the banks of the Niobrara River from Neb. Hwy. 29 west to the Nebraska-Wyoming state line.